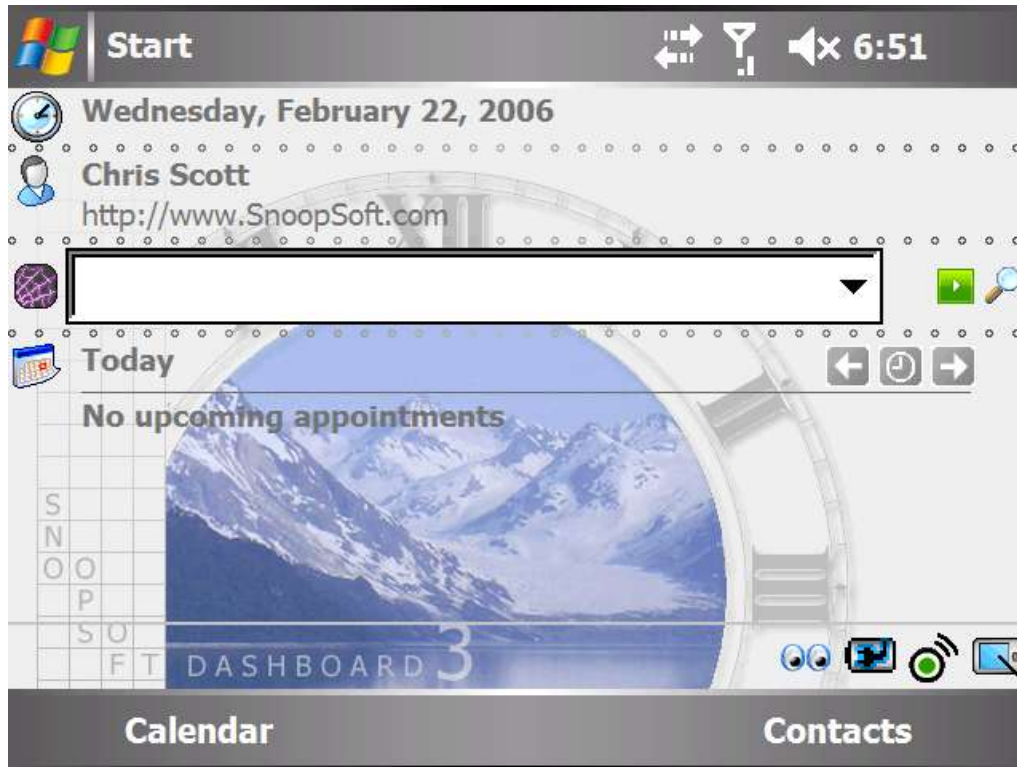


User's Guide for SnoopSoft Dashboard v3.0



SnoopSoft Dashboard v3.0 is a Windows Mobile application designed to quickly access the information that is most important and make it easy and fun to view. The program is fully customizable via “Themes” (images, colors and icons can be applied across Dashboard and the Microsoft Today page) which can be easily created using our SnoopTheme Creator tool (<http://www.snoopsoft.com/dashboard/themes.asp>).

Dashboard v3 Theme’s are much more powerful than standard Today Theme’s. They can control every aspect of the appearance of the Today page provided by Microsoft including many settings that are not provided as part of the free Theme tools available today.

Additionally, they bring new meaning to the term Theme. To SnoopSoft, a Theme is supposed to be more than just changing some colors and placing a static background image on a device. It should make the device come alive. For instance, imagine a Seasons theme that automatically changed its images each month with applicable images for Summer, Fall, Winter and Spring. Or a Theme that could change from Morning, Daytime, Evening and Night all with appropriate images, icons and colors. That’s the kind of Theme that SnoopSoft Dashboard allows.

Dashboard utilizes a “views” metaphor for accessing information. Rather than scroll off the bottom of the screen, Dashboard allows for Today plug-ins to be placed on multiple views within the program. For instance, an Agenda view might contain the date and the Appointments, or a Contacts view might contain the Web link and the Contacts. When displaying the Agenda view, the Contacts view would be hidden and not clutter up the display with information that isn’t relevant to the current situation or task. However, when needed it’s only 2 taps away.

SnoopSoft Dashboard v3 is a complete rewrite of the code for the program. After over four years it was time to overhaul the program. The result is a program that runs faster and consumes less memory than the original.

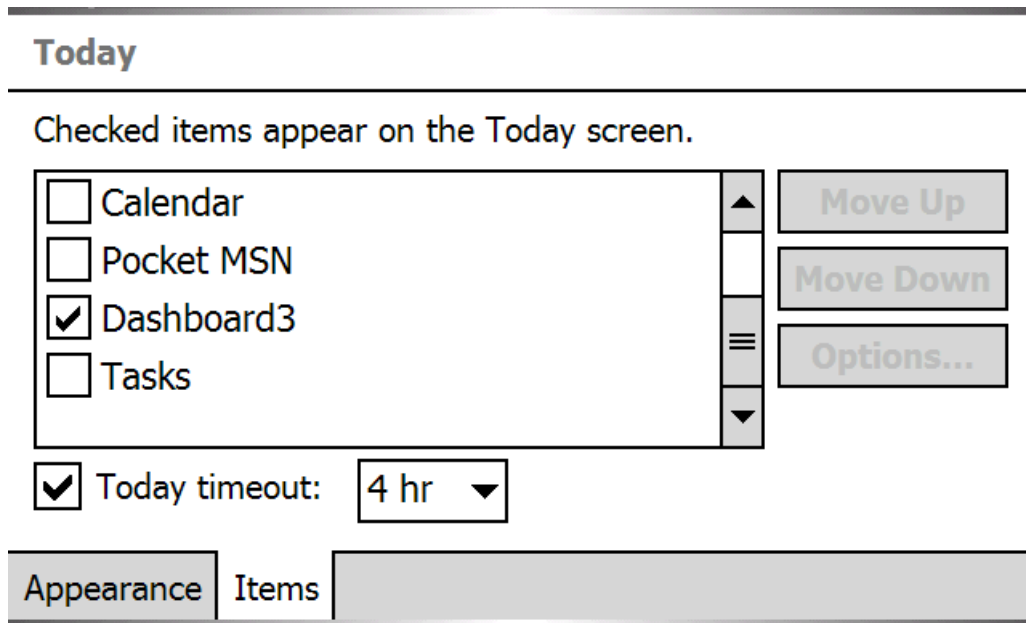
Every effort has been made with version 3 to give back more screen space in order to display more useful information. The toolbars of the prior version have been replaced with a single icon in the status bar for switching views and accessing the options.

Getting Started

To start, make sure to remove all prior versions of Dashboard on the handheld device. Then, run the SETUP.EXE file from a PC connected to the handheld device. Dashboard v3 will be copied over to the device automatically and the installation on the handheld should start next.

Dashboard does not automatically configure itself on the Today page and restart the device. You will have to do that after the installation is complete.

To enable Dashboard on the Today page, go to the START menu and launch the SETTINGS application. Next, run the Today Settings applet and click on the ITEMS tab. Disable all the plug-ins and enable the Dashboard3 plug-in.



Close out of the Today Settings applet and the Settings application. The Today page will refresh in a minute or two once Dashboard is fully loaded.

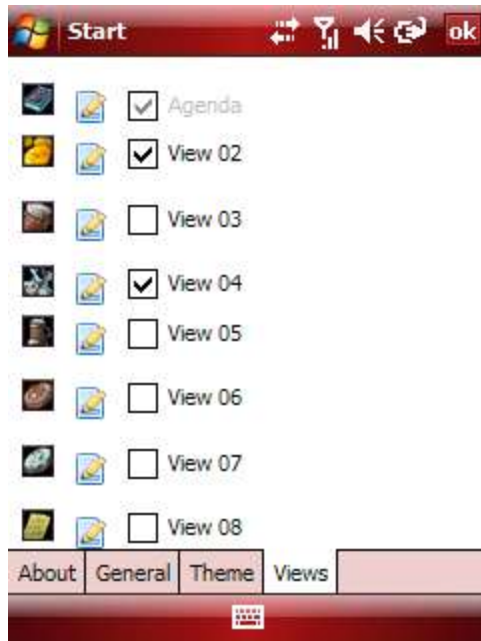
Working with Dashboard



Now that Dashboard is up and running, the screen should be completely blank with the default Theme displayed in the background. All enabled Dashboard Views will have an icon in the Status bar. These icons will be inside the main display on a Windows Mobile 5 device but on the very bottom bar if the device is running an older version of the OS. Tap on a view's icon to change to that view. This is how to change the display from one view to another.

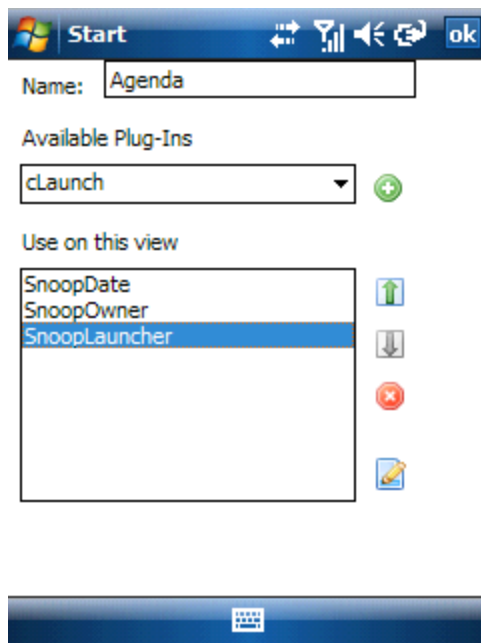
If that view is already the current view then the Options dialog will be opened when the icon is tapped. This provides fast and efficient access to the program options.

Once the Options dialog is displayed, select the **Views** tab along the bottom.



Next, select one of the views and tap on its Options icon (the paper and pencil icon).

This brings up the View Configuration dialog where the view can be configured.



To add plug-ins into the view, simply select them from the *Available Plug-Ins* drop list and tap the *Plus* icon to add them to the *Use on this View* list below. The Use on this View list contains all the plug-ins that will be displayed within the view on Dashboard's main screen. The order of the items in the list is the same order that they will be displayed on the main screen.

Note

Dashboard will not scroll the screen, so if there are more plug-ins selected than will fit on the display then the ones that do not fit will not be drawn.

To alleviate confusion, Views can also be named.

Once your view is setup the way you want it, close out of the dialogs and Dashboard will redisplay itself with the new settings.

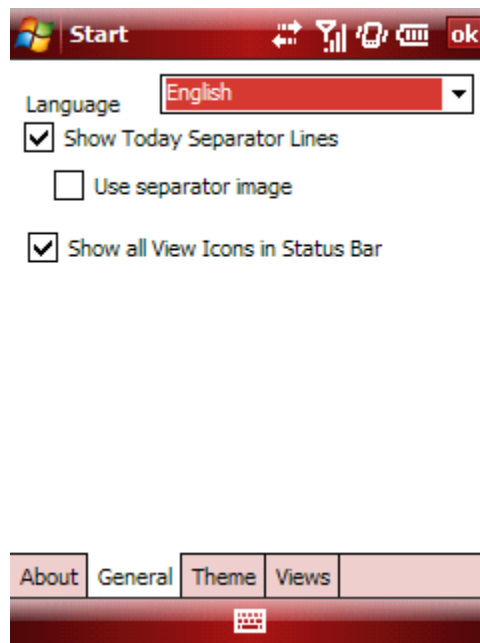
That's it for the quick setup. More comprehensive text on the various options can be found in other parts of this guide.

Configuring Dashboard

The Options dialog is the only way to configure Dashboard and the Views that it hosts. This section will delve into the various settings and configurations contained within the Options dialog and explain each setting in more detail.

To access the Options dialog simply tap on the View Icon for the currently active view (the one in color) and the Options dialog will be displayed. Alternatively, if the option for showing only one icon on the status bar is enabled then tapping on that icon will bring up a menu with the Options listed as a separate choice.

General



Language

The Language drop list will display all languages available for Dashboard. Simply select a different language and the dialogs and strings within Dashboard will change to that language.

Show Today Separator Lines

Enable this option to display separator lines between each of the plug-ins on the screen. If this option is disabled, no lines will be drawn between the plug-ins. This can save some space on the screen at the expense of some confusion between module areas.

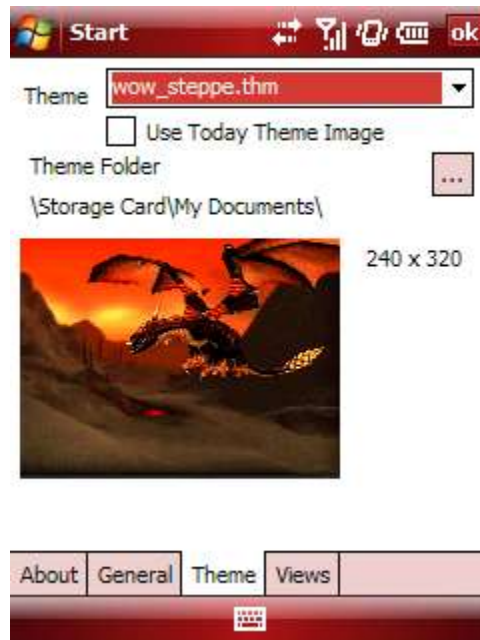
Use Separator Image

Some Theme's define a Today separator image. Uncheck this option to only draw a line instead of the image. The image provides better Theme immersion but can sometimes take a little more space from the screen.

Show all View Icons in Status Bar

Disable this option to draw only one Icon in the status bar for Dashboard. If this option is disabled, to switch views or bring up the Options dialog, tap and hold on the Dashboard icon. This is enabled by default which draws all enabled Views as icons on the status bar.

Theme



Theme

The Theme droplist displays all Theme's that Dashboard could locate on your device. Simply select a different Theme to change Themes. Dashboard will also display a preview image for the theme in this droplist.

Use Today Theme Image

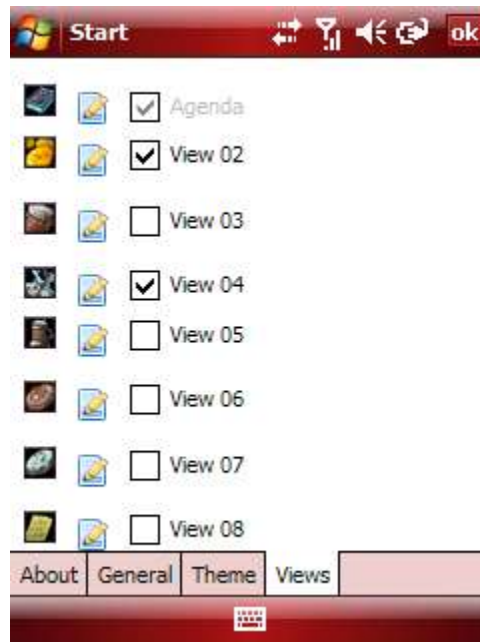
Enable this option to disable the use of the Dashboard Theme colors and images. Dashboard will no longer check that its Theme is set as the Today Theme and will use the images from the

Today theme. After changing this setting you will need to change the Today Theme in the Today Settings application for Dashboard to reload the Today Theme.

Theme Folder

The Theme Folder button selects the location of the Dashboard Themes on your device. By default, Dashboard looks in the /Program Files/Dashboard3/Themes/ folder for all Themes. Specifying a folder here causes Dashboard to look in both the default folder and this user-defined location for Theme files.

Views

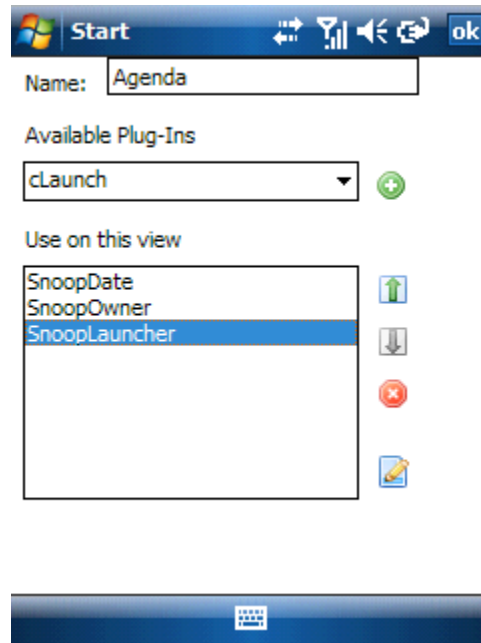


View List

The Views tab lists out all the views defined within the program next to a checkbox and 2 icons. The first icon is the default view icon. Tap on this icon to change it to any View icon defined for the Theme. The second icon is the Options icon and when tapped will load the configuration page for that specific view.

The checkbox next to each view's name will enable/disable the view within Dashboard. This was a highly requested feature and for people that do not need many views it will eliminate some of the visual clutter and allow for switching views quicker because there are less of them to select from. From a memory usage perspective, Dashboard will use no more or less memory if you have more or less views enabled.

View Configuration



Name

Use the name field to key in a name for the View to make it easier to distinguish between one view and another.

Available Plug-Ins

The Available Plug-Ins drop list contains all the Today plug-ins installed on the device as well as the Dashboard-specific plug-ins. Simply select the plug-ins that you want and tap the plus icon to add them to the view.

Adding a plug-in to the view removes it from the available drop-list for that view. Each plug-in can only be used once within a view, however, *plug-ins can be used on as many views as you like.*

How the plug-in responds to being on multiple views is up to the plug-in designer. Dashboard exposes an interface to plug-in designers so that they can become “view-aware” which means that they can display different content depending on the view they are displayed within. Most plug-ins will just display the same thing regardless of the view.

Note

Microsoft has a hard cap on the number of Today plug-ins that will be displayed in the Today Settings applet. This number is very small and because of this, Dashboard does not add any of its plug-ins to the Today Settings Item list.

Fortunately, there is no limit to the number of plug-ins that you can install on the device, just the number that Microsoft will recognize. Dashboard has no limit on the number of plug-ins that it will read in from the system and will therefore show all available plug-ins as well as its own. If there is ever a discrepancy between what the Today Settings applet shows and what Dashboard shows, Dashboard is showing the actual items installed on the device. The Today Settings applet

randomly shows however many it is configured to show and those can change from day to day if the number of actual items exceeds its capacity.

Use on this View

The Use on this View list contains all the plug-ins that will be displayed within the view on Dashboard's main screen.

The order of the items in the list is the same order that they will be displayed on the main screen. Use the up/down arrows on the view to move a plug-in up or down within the list.

The Delete (X) icon is used to remove a plug-in from the list and it will automatically be added back into the Available drop list.

The Options icon on the lower left of the screen will bring up the Options dialog for the selected plug-in when tapped. For instance, selecting the SnoopDate plug-in in the list and tapping the Options icon will bring up the Options for the SnoopDate plug-in.